

BODY MEASUREMENTS IN INCHES/CENTIMETERS: MISSES'/WOMEN'S

MESURES DU CORPS EN CENTIMETRES: JEUNES/FEMMES

MISSES': About 5'5" to 5'6" (165cm to 167cm) height. **MISS PETITE:** About 5'2" to 5'3" (157cm to 160cm) height. Misses patterns are made for a B cup with 2" (5cm) difference between bust and high bust measurement.

JEUNES FEMMES: Environ 165cm à 167cm de stature. **PETITES JEUNES FEMMES:** Environ 157cm à 160cm de stature. Les patrons pour jeunes femmes sont pour un bonnet B avec une différence de 6.3 cm entre la mesure de la poitrine et de la poitrine haute.

SIZE	XS		S		M		L		XL		XXL	
	4	6	8	10	12	14	16	18	20	22	24	26
Sizes-European	30	32	34	36	38	40	42	44	46	48	50	52
Sizes-French	32	34	36	38	40	42	44	46	48	50	52	54
	in. cm.	in. cm.	in. cm.	in. cm.	in. cm.	in. cm.	in. cm.	in. cm.	in. cm.	in. cm.	in. cm.	in. cm.
High Bust	27½ 70	28½ 73	29½ 75	30½ 78	32 81	34 87	36 92	38 97	40 102	42 107	44 112	46 117
Bust	29½ 75	30½ 78	31½ 80	32½ 83	34 87	36 92	38 97	40 102	42 107	44 112	46 117	48 122
Waist	22 56	23 58	24 61	25 64	26½ 67	28 71	30 76	32 81	34 87	37 94	39 99	41½ 104
Hip	31½ 80	32½ 83	33½ 85	34½ 88	36 92	38 97	40 102	42 107	44 112	46 117	48 122	50 127
Back Waist Length	15¼ 39	15½ 39.5	15¾ 40	16 40.5	16¼ 41.5	16½ 42	16¾ 42.5	17 43	17¼ 44	17½ 44.5	17¾ 45	18 46
Petite Back Waist Length	14 35.5	14¼ 36	14¾ 37.5	15 38	15¼ 39	15½ 39.5	15¾ 40	16 40.5	16¼ 41	16½ 42	16¾ 42.5	17 43

WOMEN'S: About 5'5" to 5'6" (165cm to 167cm) height. **WOMEN'S PETITE:** About 5'2" to 5'3" (157cm to 160cm) height. Womens patterns are made for a C cup with 1" (2.5cm) difference between bust and high bust measurement.

FEMMES: Environ 165cm à 167cm de stature. **PETITES FEMMES:** Environ 157cm à 160cm de stature. Les patrons pour femmes sont pour un bonnet C avec une différence de 2.5cm entre la mesure de la poitrine et de la poitrine haute.

SIZE	1X		2X		3X		4X		5X		6X	
	16W	18W	20W	22W	24W	26W	28W	30W	32W	34W	36W	38W
Sizes-European	42	44	46	48	50	52	54	56	58	60	62	64
Sizes-French	44	46	48	50	52	54	56	58	60	62	64	66
	in. cm.	in. cm.	in. cm.	in. cm.	in. cm.	in. cm.	in. cm.	in. cm.	in. cm.	in. cm.	in. cm.	in. cm.
High Bust	37 94	39 99	41 104	43 109	45 114	47 119	49 124	51 130	53 135	55 140	57 145	59 150
Bust	38 97	40 102	42 107	44 112	46 117	48 122	50 127	52 132	54 137	56 142.5	58 147	60 152.5
Waist	31 79	33 84	35 89	37 94	39 99	41½ 105	44 112	46½ 118	49 124	51½ 130	53 134	54½ 138
Hip	40 102	42 107	44 112	46 117	48 122	50 127	52 132	54 137	56 142	58 147	60 152	62 157.5
Back Waist Length	16¾ 42.5	17¼ 43	17¾ 44	18¼ 44	18¾ 44.5	19¼ 45	19¾ 45	20¼ 45.5	21 46	21¼ 46	21¾ 46.5	22¼ 47
Petite Back Waist Length	16 40.5	16¼ 41	16¾ 41.5	17¼ 42	17¾ 42	18¼ 42.5	18¾ 42.5	19¼ 43	19¾ 43	20¼ 43.5	20¾ 44	21¼ 44.5

**MISSES'/WOMEN'S
JEUNES FEMMES/
FEMMES**

- 1- High Bust**
Poitrine haute
- 2- Bust**
Poitrine
- 3- Waist**
Taille
- 4- Hip**
Hanches
- 5- Back Waist Length**
Longueur dos
- 6- Height**
Hauteur

TOPS / HAUTS
The Bust measurement determines the size.
Le tour de poitrine détermine la taille.

BOTTOMS / LES FONDS
The Hip measurement determines the size.
Le tour de hanches détermine la taille.

BODY MEASUREMENTS IN INCHES/CENTIMETERS: CONNIE CRAWFORD

MESURES DU CORPS EN CENTIMETRES: CONNIE CRAWFORD

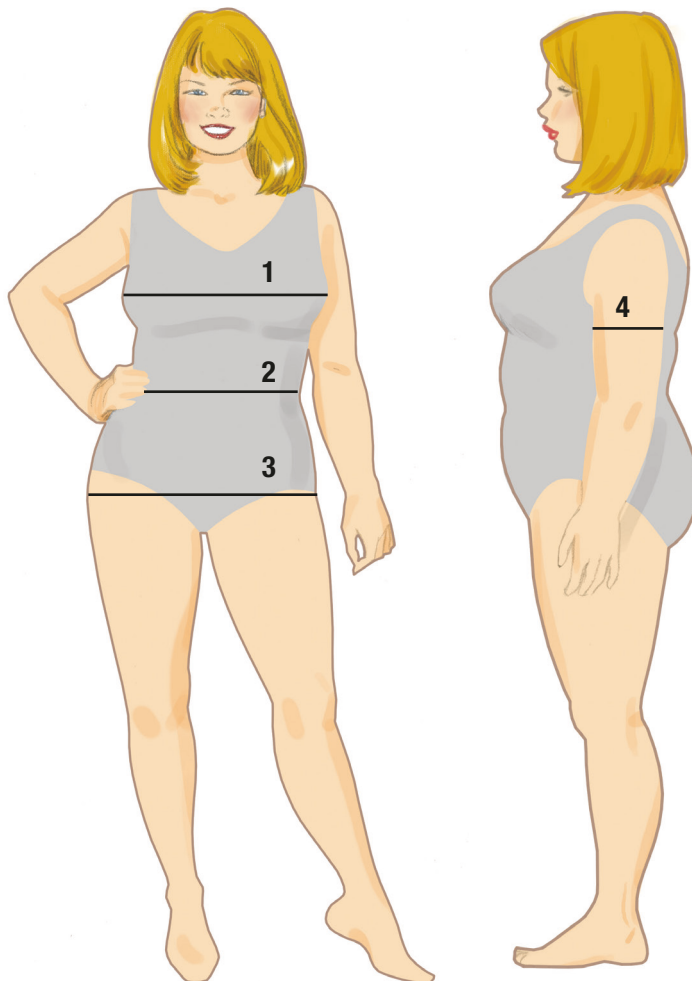
CONNIE CRAWFORD CUSTOM SIZE CHART

TABLEAU DE TAILLES SUR MESURE DE CONNIE CRAWFORD

SIZE	XS	S	M	L	XL	XXL	1X	2X	3X	4X	5X	6X
Retail Size	3-4	6-8	10-12	14	16	18-20W	22-24W	26-28W	30-32W	34-36W	38-40W	42-44W
Tailles	T-Petite	Petite	Moyenne	Grande	T-Grande	TTG	1X	2X	3X	4X	5X	6X
	in. cm.	in. cm.	in. cm.	in. cm.	in. cm.	in. cm.	in. cm.	in. cm.	in. cm.	in. cm.	in. cm.	in. cm.
Bust	34-35 87-89	36-37 92-94	38-39 97-99	40-41 102-104	42-43 107-109	44-45 112-115	46-48 117-122	50-52 127-132	54-56 137-142	58-60 147-152	62-64 155-160	66-68 165-170
Waist	25-26 64-66	27-28 68-71	29-30 74-76	31-32 79-81	33-34 84-87	36-37 92-94	38-40 97-102	42-44 107-112	46-48 117-122	50-52 127-132	54-55 137-140	56-58 142-147
Hip	35-36 89-92	37-38 94-97	39-40 99-102	41-42 104-107	43-46 109-117	48-52 122-132	54-56 137-142	58-60 147-152	62-64 155-160	66-68 165-170	70-72 175-180	74-76 185-190
Biceps						15½ 39.5	16½ 42	18 45	19½ 49.5	21 53	22½ 56	24 61

CONNIE CRAWFORD

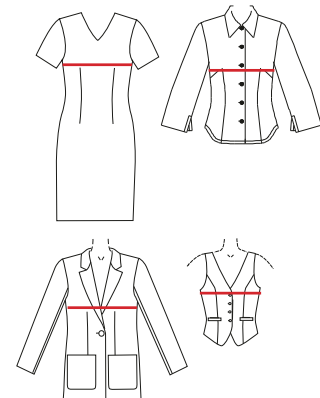
- 1- Bust
Poitrine
- 2- Waist
Taille
- 3- Hip
Hanches
- 4- Biceps
Biceps



TOPS / HAUTS

The Bust measurement determines the size.

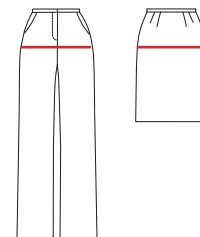
Le tour de poitrine détermine la taille.



BOTTOMS / LES FONDOS

The Hip measurement determines the size.

Le tour de hanches détermine la taille.



BODY MEASUREMENTS IN INCHES/CENTIMETERS: MISSES'/WOMEN'S

MESURES DU CORPS EN CENTIMETRES: JEUNES/FEMMES

MISSES': About 5'5" to 5'6" (165cm to 167cm) height. **MISS PETITE**: About 5'2" to 5'3" (157cm to 160cm) height. Misses patterns are made for a B cup with 2" (5cm) difference between bust and high bust measurement.

JEUNES FEMMES: Environ 165cm à 167cm de stature. **PETITES JEUNES FEMMES**: Environ 157cm à 160cm de stature. Les patrons pour jeunes femmes sont pour un bonnet B avec une différence de 6.3 cm entre la mesure de la poitrine et de la poitrine haute.

SIZE	XS		S		M		L		XL		XXL													
	4	6	8	10	12	14	16	18	20	22	24	26												
Sizes-European	30	32	34	36	38	40	42	44	46	48	50	52												
Sizes-French	32	34	36	38	40	42	44	46	48	50	52	54												
	in.	cm.	in.	cm.	in.	cm.	in.	cm.	in.	cm.	in.	cm.	in.	cm.										
High Bust	27½	70	28½	73	29½	75	30½	78	32	81	34	87	36	92	38	97	40	102	42	107	44	112	46	117
Bust	29½	75	30½	78	31½	80	32½	83	34	87	36	92	38	97	40	102	42	107	44	112	46	117	48	122
Waist	22	56	23	58	24	61	25	64	26½	67	28	71	30	76	32	81	34	87	37	94	39	99	41½	104
Hip	31½	80	32½	83	33½	85	34½	88	36	92	38	97	40	102	42	107	44	112	46	117	48	122	50	127
Back Waist Length	15¼	39	15½	39.5	15¾	40	16	40.5	16¼	41.5	16½	42	16¾	42.5	17	43	17¼	44	17½	44.5	17¾	45	18	46
Petite Back Waist Length	14	35.5	14¼	36	14½	37.5	15	38	15¼	39	15½	39.5	15¾	40	16	40.5	16¼	41	16½	42	16¾	42.5	17	43

TODAY'S FIT BY SANDRA BETZINA: About 5'5" to 5'6" (165cm to 167cm) height. **WOMEN'S PETITE**: About 5'2" to 5'3" (157cm to 160cm) height.

TODAY'S FIT BY SANDRA BETZINA: Environ 165cm à 167cm de stature. **PETITES FEMMES**: Environ 157cm à 160cm de stature.

SIZE	A		B		C		D		E		F		G		H		I		J	
	in.	cm.	in.	cm.	in.	cm.	in.	cm.	in.	cm.	in.	cm.	in.	cm.	in.	cm.	in.	cm.	in.	cm.
Bust	32	81	34	86.5	36	91.5	38	96.5	40½	103	43	109	46	117	49	124.5	52	132	55	140
Waist	26½	67	28½	72	30½	77.5	32½	82.5	35	89	37½	95	41½	105	44½	113	47½	121	50½	128
Hip	34½	87.5	36½	92.5	38½	98	40½	103	42½	108	45	116	48	122	51	130	54	137	57	145
Back Waist Length	15¾	40	16	40.5	16¼	41	16½	42	16¾	42.5	17	43	17¼	44	17½	44	17¾	44	17¾	44

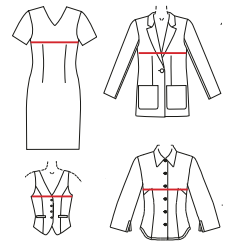
MISSES' JEUNES FEMMES

- 1- High Bust**
Poitrine haute
- 2- Bust**
Poitrine
- 3- Waist**
Taille
- 4- Hip**
Hanches
- 5- Back Waist Length**
Longueur dos
- 6- Height**
Hauteur

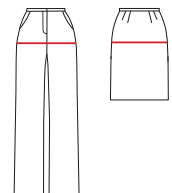
TODAY'S FIT BY SANDRA BETZINA

- 1- Bust**
Poitrine
- 2- Waist**
Taille
- 3- Hip**
Hanches
- 4- Back Waist Length**
Longueur dos
- 5- Height**
Hauteur

TOPS / HAUTS
The Bust measurement determines the size.
Le tour de poitrine détermine la taille.



BOTTOMS / LES FONDS
The Hip measurement determines the size.
Le tour de hanches détermine la taille.



BODY MEASUREMENTS IN INCHES/CENTIMETERS: MEN

MESURES DU CORPS EN CENTIMETRES: HOMMES

MEN'S: For men of average build; about 5'10" height.

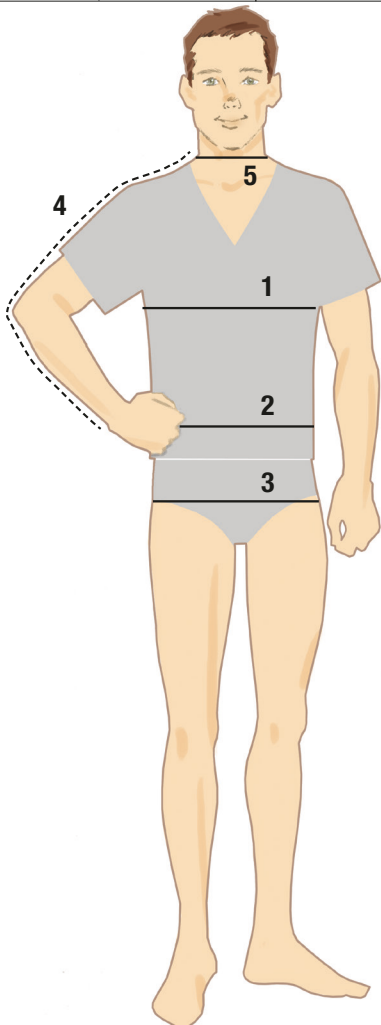
HOMMES: Pour hommes de corpulence moyenne; environ 177cm de stature.

SIZE	XS		S		M		L		XL		XXL		XXXL													
	32	34	36	38	40	42	44	46	48	50	52	54	56													
Sizes- European																										
French	42	44	46	48	50	52	54	56	58	60	62	64	66													
	in.	cm.	in.	cm.	in.	cm.	in.	cm.	in.	cm.	in.	cm.	in.	cm.												
Chest	32	81	34	87	36	92	38	97	40	102	42	107	44	112	46	117	48	122	50	127	52	132	54	137	56	142.5
Waist	27	68.5	28	71	30	76	32	81	34	87	36	92	39	99	42	107	44	112	46	117	48	122	50	127	52	132
Hip (Seat)	34	87	35	89	37	94	39	99	41	104	43	109	45	114	47	119	49	124	51	130	53	135	55	140	57	145
Shirt Sleeve	31	79	32	81	32	81	33	84	33	84	34	87	34	87	35	89	35	89	35	89	35	89	35	89	35	89
Neckband	13½	34	14	35.5	14½	37	15	38	15½	39.5	16	40.5	16½	42	17	43	17½	44.5	18	46	18½	47	19	48.5	19½	49.5

UNISEX: Unisex sizing is based on men's measurements.

UNISEXE: La taille unisexe est basée sur les mesures pour hommes.

SIZE	XXS		XS		S		M		L		XL		XXL		XXXL	
	in.	cm.	in.	cm.	in.	cm.	in.	cm.	in.	cm.	in.	cm.	in.	cm.	in.	cm.
Chest/Bust	28-29	71-74	30-32	76-81	34-36	87-92	38-40	97-102	42-44	107-112	46-48	117-122	50-52	127-132	54-56	137-142.5
Waist	29-30	74-76	31-32½	79-82	35-37	89-94	39-41	99-104	43-45	109-114	47-49	119-124	51-53	130-135	55-57	140-145



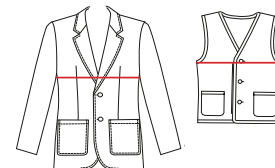
MEN'S HOMMES

- 1- Chest**
Poitrine
- 2- Waist**
Taille
- 3- Hip**
Hanches
- 4- Shirt Sleeve**
Manche de chemise
- 5- Neckband**
Bande d'encolure

JACKET / VESTE VEST / GILETS

The Chest measurement determines the size.

Le tour de poitrine détermine a taille.



SHIRT / CHEMISE

The Neck measurement determines the size.

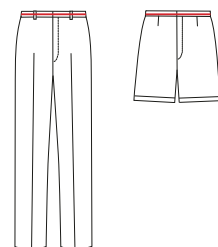
Le tour de cou détermine la taille.



PANTS / PANTALON

The Waist measurement determines the size.

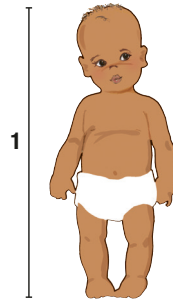
Le tour de taille détermine la taille.



BODY MEASUREMENTS IN INCHES/CENTIMETERS: KIDS

MESURES DU CORPS EN CENTIMETRES: ENFANTS

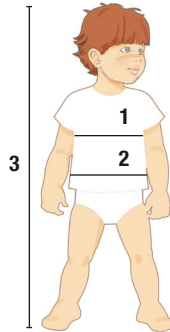
INFANTS: For babies who are not yet walking.
BÉBÉS: Pour bébés qui ne marchent pas encore.



SIZE	Newborn		Small		Medium		Large		X-Large	
Weight	lbs.	kg.	lbs.	kg.	lbs.	kg.	lbs.	kg.	lbs.	kg.
	8-12	4-6	13-17	6-8	18-21	8-10	22-25	10-11	26-29	12-13
Height	in.	cm.	in.	cm.	in.	cm.	in.	cm.	in.	cm.
	18-24	46-61	25-26	64-66	27-28	69-71	29-30	74-76	31-32	79-81
Age (months)	0-3		6		9		12		18-24	

TODDLERS' JEUNES ENFANTS

- 1-Chest**
Poitrinee
- 2-Waist**
Taille
- 3-Height**
Hauteur

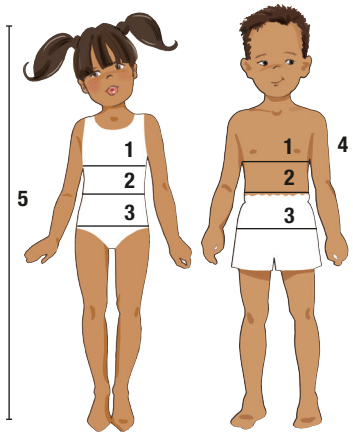


TODDLERS': Between a baby and child. Pants have diaper allowance.
JEUNES ENFANTS: Pour les tailles entre bébé et jeune enfant.
 Le pantalon a de l'ampleur pour la couche.

SIZE	½		1		2		3		4	
	in.	cm.	in.	cm.	in.	cm.	in.	cm.	in.	cm.
Chest	19	48	20	51	21	53	22	56	23	58
Waist	19	48	19½	50	20	51	20½	52	21	53
Height	28	71	31	79	34	87	37	94	40	102

CHILDREN ENFANTS GIRLS/BOYS FILLES/GARÇONS

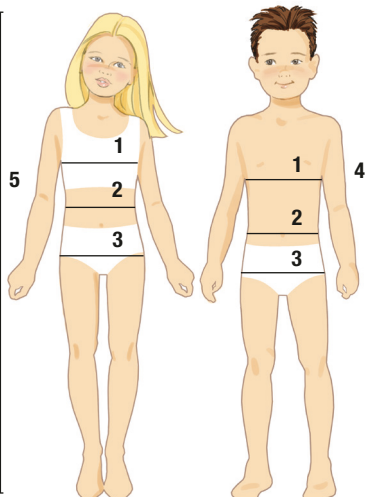
- 1-Chest**
Poitrinee
- 2-Waist**
Taille
- 3-Hip**
Taille
- 4-Back Waist Length**
Longueur dos
- 5-Height**
Hauteur



CHILDREN: Child who is walking and not wearing diapers.
ENFANTS: Enfant qui marche et ne porte pas de couches.

SIZE	XS		S			M			L							
	2	3	4	5	6	6X	7	8								
	in.	cm.	in.	cm.	in.	cm.	in.	cm.	in.	cm.						
Chest	21	53	22	56	23	58	24	61	25	64	25½	65	26	66	27	69
Waist	20	51	20½	52	21	53	21½	55	22	56	22½	57	23	58	23½	60
Hip	-	-	-	-	24	61	25	64	26	66	26½	67	27	69	28	71
Back Waist Length	8½	22	9	23	9½	24	10	25.5	10½	27	10¾	27.5	11½	29.5	12	31
Height	35	89	38	97	41	104	44	112	47	119	48	122	50	127	52	132

GIRLS/BOYS: For growing girl/boy who has not yet begun to mature.
FILLES/GARÇONS: Pour fille/garçon en pleine croissance.



SIZE	Girls & Boys								Girls Plus													
	S		M		L																	
	7	8	10	12	14	16	8½	10½	12½	14½	16½											
	in.	cm.	in.	cm.	in.	cm.	in.	cm.	in.	cm.	in.	cm.										
Chest	26	66	27	69	28½	73	30	76	32	81	34	87	30	76	30½	80	33	84	34½	88	36	92
Waist	23	58	23½	60	24½	62	25½	65	26½	67	27½	70	28	71	29	74	30	76	31	79	32	81
Hip	27	69	28	71	30	76	32	81	34	87	36	92	33	84	34½	88	36	92	37½	96	39	99
Back Waist Length	11½	29.5	12	31	12¾	32.5	13½	34.5	14½	36	15	38	12½	32	13¾	34	14	35.5	14¾	37.5	15½	39.5
Height	50	127	52	132	56	142	58½	149	61	155	61½	156	52	132	56	142	58½	149	61	155	63½	161