

B6491

EASY/FACILE

MISSES' SHIRT: Very loose-fitting shirt has shaped hems with tucks. **B:** Border prints.

Combinations: **Y**(XS-S-M), **ZZ**(L-XL-XXL)

FABRICS: Linen, Broadcloth, Lightweight Denim, Novelty Wovens. **B:** Border Prints.

Unsuitable for obvious diagonals.

*With Nap. **Without Nap.

SIZES	XS	S	M	L	XL	XXL
	4-6	8-10	12-14	16-18	20-22	24-26
A 45"/**	3¼	3¾	3¾	3½	3¾	3¾
60"/**	2¾	2¾	2¾	3	3¾	3¾

B 45", 60"	3¾	3½	3¾	3¾	4	4¼
-------------------	----	----	----	----	---	----

FUSIBLE INTERFACING A, B - 18", 20" - 1½ yds.

NOTIONS: A, B: Scrap of Fusible Interfacing. **A:** Eight ½" Buttons. **B:** Seven ¾" Buttons.

FINISHED GARMENT MEASUREMENTS

Width, lower edge

A, B	50½	52½	56	60	64	68
------	-----	-----	----	----	----	----

Back length from base of neck

A, B	33¼	33¾	34¼	34¾	35¼	35¾
------	-----	-----	-----	-----	-----	-----

CHEMISE (J. FEMME): Chemise très ample à ourlet en forme et plis. **B:** Tissus à bordure.

Séries: **Y**(TP-P-M), **ZZ**(G-TG-TTG)

TISSUS: Toile de lin, Toile, Denim léger, Tissés fantaisie. **B:** Imprimé à bordure.

Grandes diagonales ne conviennent pas.

*Avec Sens. **Sans Sens.

TAILLES	TP	P	M	G	TG	TTG
	4-6	8-10	12-14	16-18	20-22	24-26
A 115cm**	3.00	3.10	3.10	3.20	3.40	3.50
150cm**	2.40	2.60	2.70	2.80	2.90	3.10

B 115, 150cm*	3.10	3.20	3.50	3.60	3.70	3.90
----------------------	------	------	------	------	------	------

ENTOILAGE THERMOCOILLANT A, B - 46, 51cm - 1.1m

MERCERIE: A, B: Un bout d'entoilage thermocoillant. **A:** 8 Boutons de 16mm. **B:** 7 Boutons de 19mm.

MESURES DU VÊTEMENT FINI

Largeur à l'ourlet

A, B	128	133	142	152	163	173
------	-----	-----	-----	-----	-----	-----

Longueur - dos votre nuque à l'ourlet

A, B	85	86	87	88	90	91
------	----	----	----	----	----	----



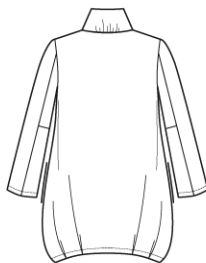
A



A



B



B

